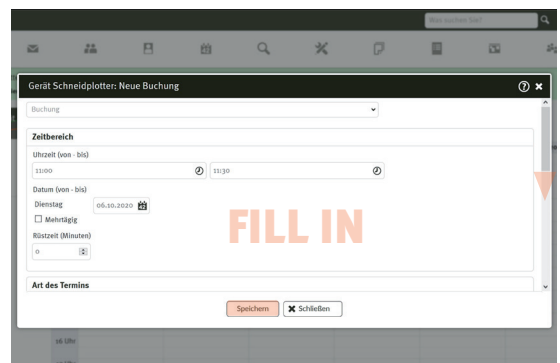
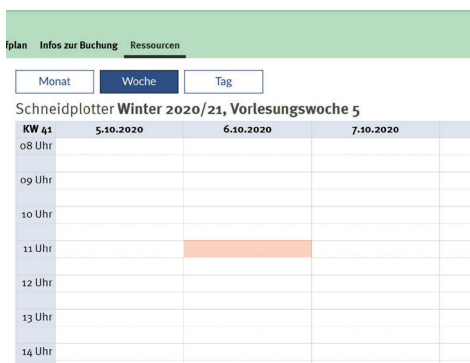
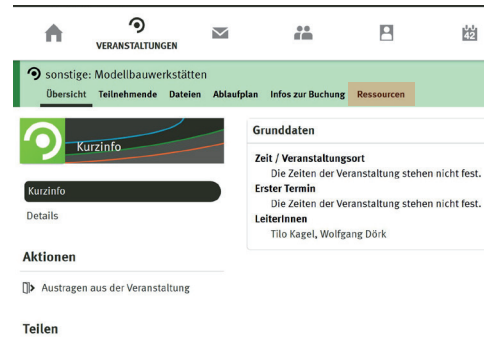
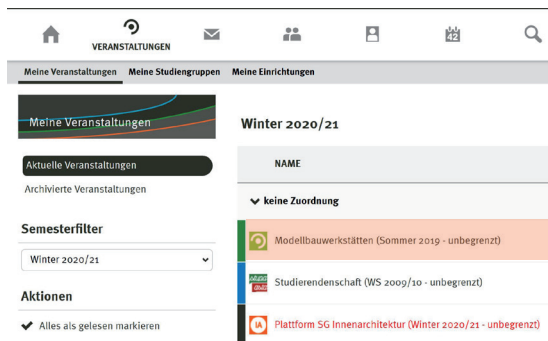
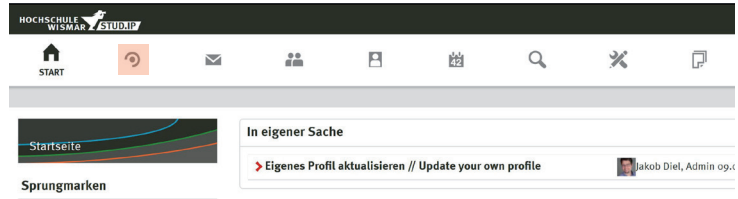


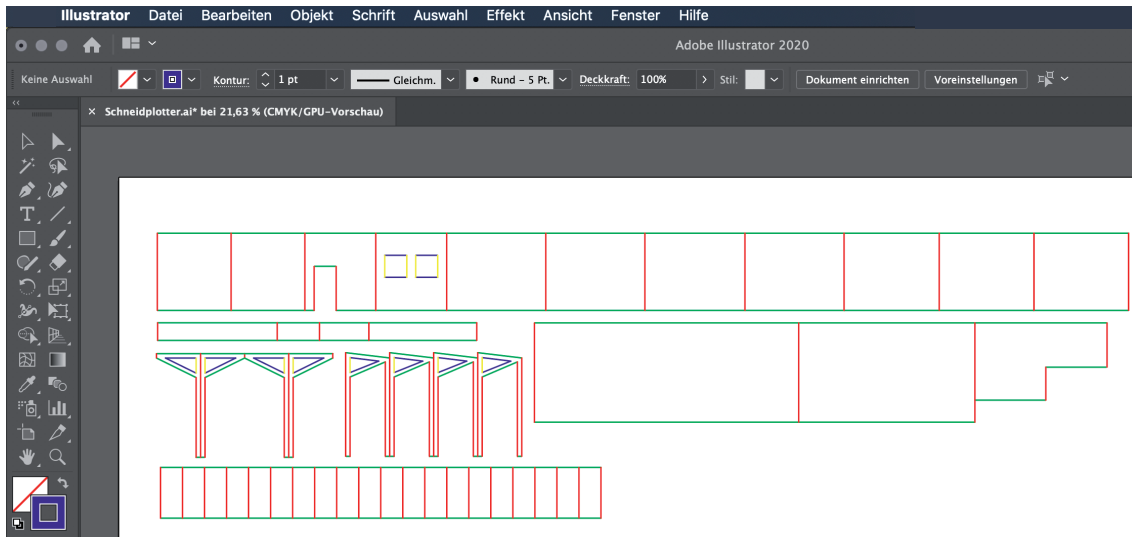
# SCHNEIDPLOTTER

## 1 get an appointment



## 2 create a file

operating range Schneidplotter: **maximum 1175 x 875 mm**  
create the worksheet in Illustrator according to the **size of your material**  
leave a **10mm margin** to fix your material with crepe tape



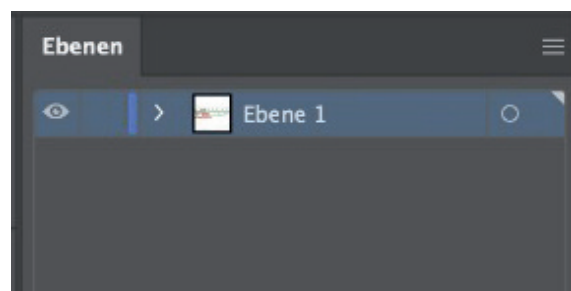
- put surfaces with the **same cutting lines** together
- » spares cuts and saves time
  - all **horizontal lines** in one **colour**
  - all **vertical lines** in one **colour**
  - for **contours within other contours** use **different colours**
  - choose whatever colour
- » in the cutting process each colour will be selected separately and cut or drawn in succession

### IMPORTANT !

**draw all lines on one layer**

**delete all unnecessary dots,  
lines and layers**

**the minimal cutting radius  
accrues to the double of material  
thickness**



## 3 send your file

---

save file as **Adobe Illustrator CS5** or any older version

email your ai-file to: **schneidplotter-fg@hs-wismar.de**

» on your appointment day don't forget to bring **crepe tape** to fix your material

## 4 what's possible?

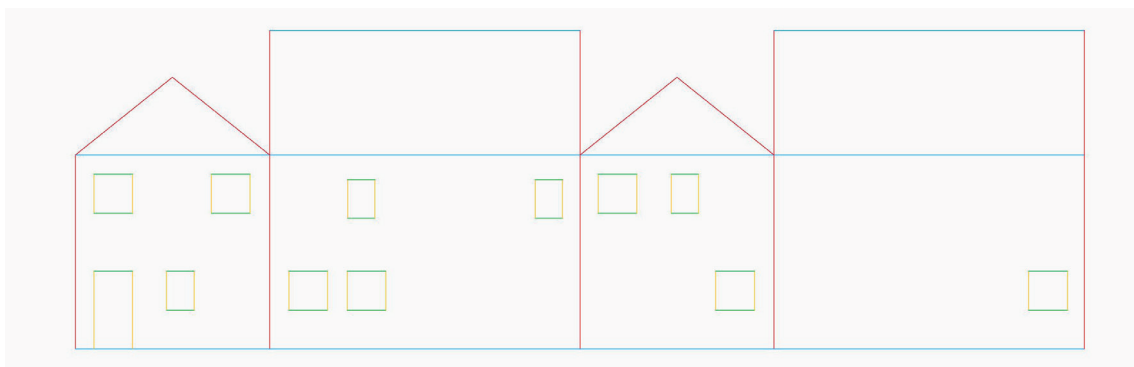
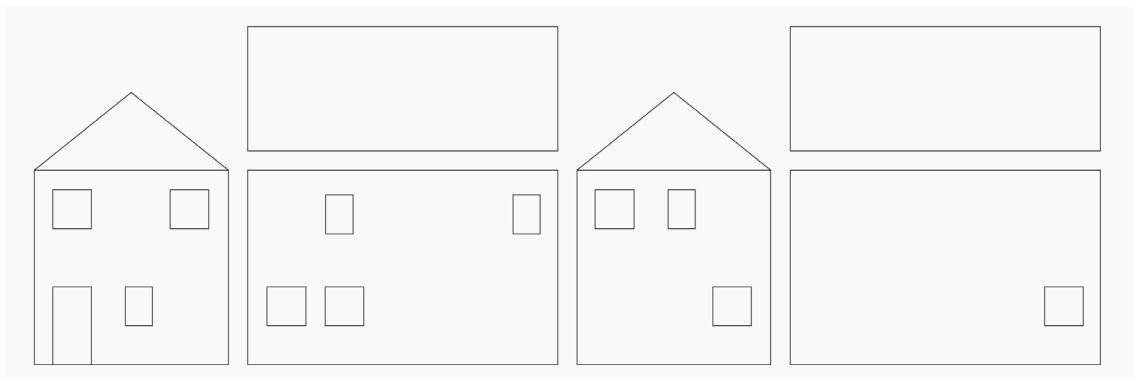
---

folding  
drawing  
cutting

with a black ballpen (provided)  
in general you can cut everything, that you could also cut by hand (material thickness maximum 5mm)  
(cardboard, paper, foam, kappa...)

## 5 example

---



- » in this case everything should be cut
- » first the inner contours will be cut (yellow and green)
- » after that the outlines will be cut (red and blue)
- » if anything else should be drawn or folded, choose a different colour for these lines